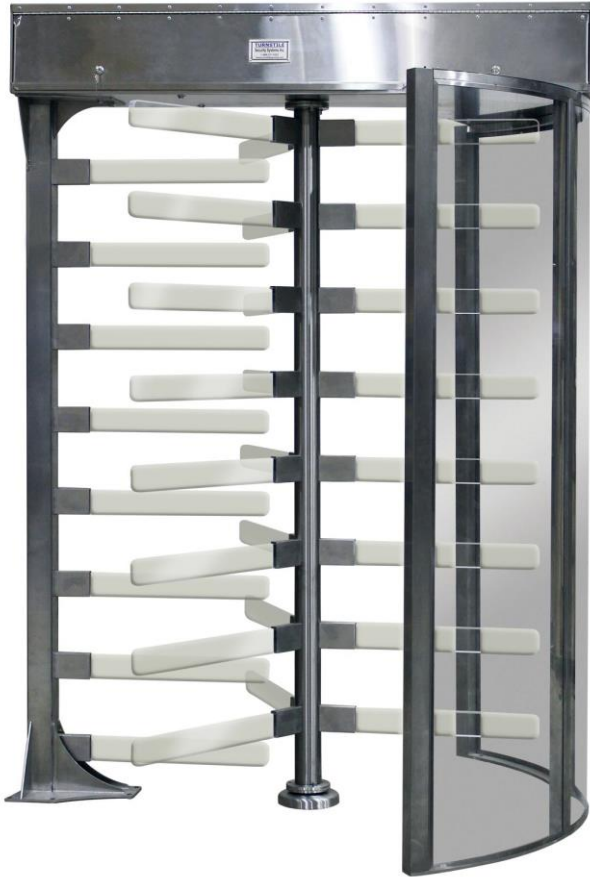


3000-CA

TURNSTILE
Security Systems Inc.

Since 1981, Turnstile Security Systems has been a manufacturer of quality pedestrian control products. Our goal is to provide our customers with the highest quality products with unsurpassed customer service.



Turnstile Security full height turnstiles are used to permit unsupervised exit and entry for a variety of applications. Our products will conveniently integrate with any access control systems and are available in manual and electric control versions.

With the 3000-CA you have a turnstile that will effectively protect areas that demand full security. The transparent arms and clear side panels achieve an open and inviting entry point that will complement any location. Our product's attention to detail and modern design will pleasantly welcome your visitors and employees while maintaining a high level of security.

This product is also available in a tandem design 3000-CAT that combines the functions of two single turnstiles into one unit, reducing the required footprint.

APPLICATIONS

- Lobbies
- Warehouses
- Distribution centers
- Unsupervised entries or exits
- Data centers
- Corporate offices
- Government offices
- Correctional centers
- Corporate offices
- Government offices

RETAIL

INDUSTRIAL

ENTERTAINMENT

FITNESS

GOVERNMENT

TRANSPORTATION

EDUCATIONAL

TURNSTILE
Security Systems Inc.

40 Erin Park Drive, Erin, Ontario, N0B1T0
Ph: 519-833-9494 Toll Free: 1-888-371-2222

Email: sales@turnstilesecurity.com

Website: www.turnstilesecurity.com

"the secure choice"

3000-CA



Since 1981, Turnstile Security Systems has been a manufacturer of quality pedestrian control products. Our goal is to provide our customers with the highest quality products with unsurpassed customer service.

PRODUCT FEATURES

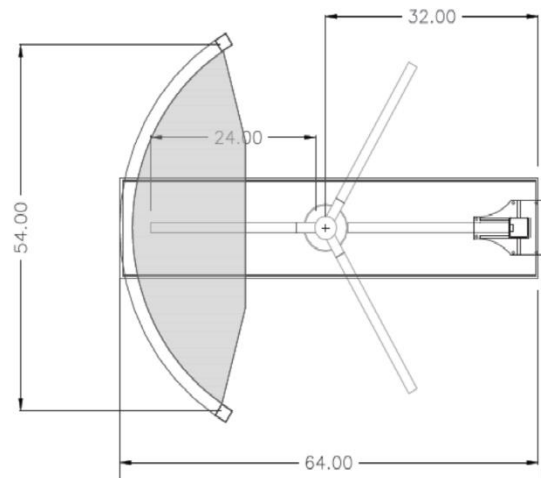
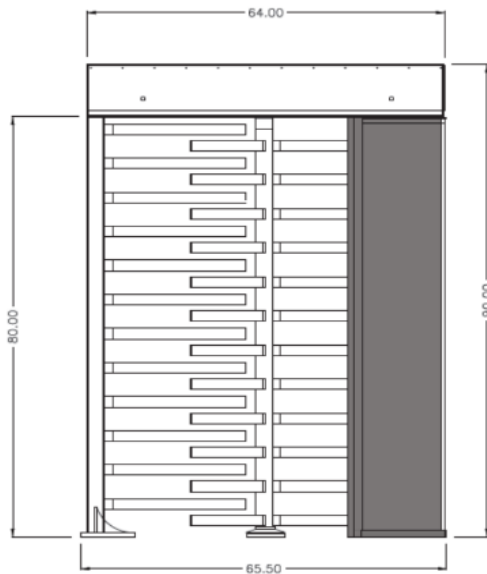
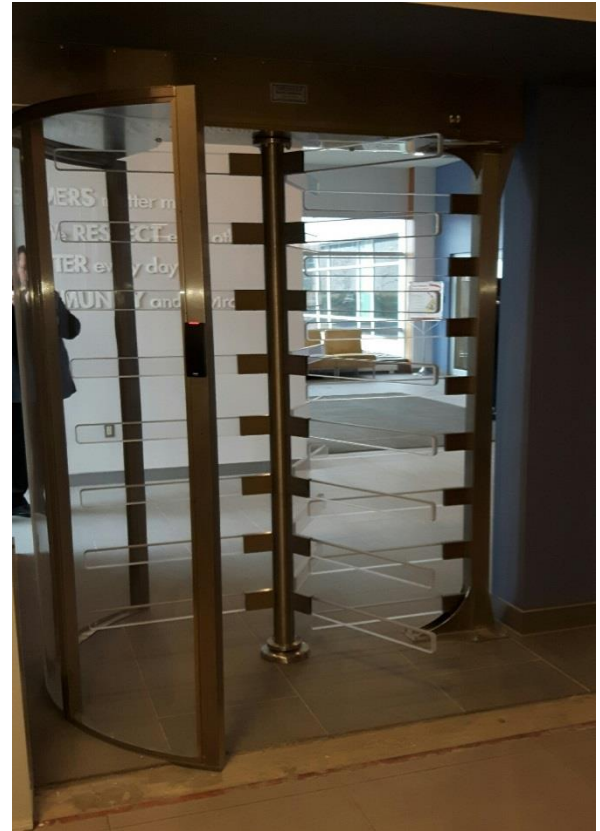
- Crystal clear side panels that create a stylish clear profile
- Lockable hinged door channel cover allows for easy service, improved accessibility and increased installation options
- Mechanically attached rotor and king post acrylic arms will reduce maintenance cost and provide increased strength
- Hydraulic speed control with smooth self centering column increases user safety and requires minimal maintenance
- Suspended rotor assembly eliminates base unit wear and tear
- Fail secure/fail safe configuration is easily changeable

PRODUCT OPTIONS

Card reader mounting plates	Electronic counter
Indicating lights red/green	Stainless steel and powder coat finishes
Remote release button	220v, 50-60Hz power supply

TECHNICAL SPECIFICATION

Power Supply	110VAC 50-60Hz stepped down to 24v
Power Consumption	60w
Temp	-40c to +50c (-40F to +122F)
IP Rating	65
Weight	????



RETAIL INDUSTRIAL ENTERTAINMENT FITNESS GOVERNMENT TRANSPORTATION EDUCATIONAL



40 Erin Park Drive, Erin, Ontario, N0B1T0
 Ph: 519-833-9494 Toll Free: 1-888-371-2222
Email: sales@turnstilesecurity.com
Website: www.turnstilesecurity.com

“the secure choice”