

2014

3000 SERIES HIGH GATE INSTALLATION AND SERVICE MANUAL



Tandem



Single

TURNSTILE SECURITY SYSTEMS

THIS CATALOGUE IS MEANT AS
REFERENCE MATERIAL FOR TURNSTILE
SECURITY SYSTEMS Inc. FOR THE SOLE
PURPOSE OF INFORMING POTENTIAL
CUSTOMER OF FEATURE, ADVANTAGES
AND BENEFITS OF TURNSTILE SECURITY
SYSTEMS PRODUCTS.

7/8/2014

CONTENTS

- 1. Parts Check / Start Layout**
- 2. Single High Gate Floor Layout**
- 3. Tandem High Gate Floor Layout**
- 4. Anchoring : Using Wedge Anchors**
- 5. Preparing The Upper Cabinet For Placement**
- 6. Securing The Cabinet**
- 7. Mounting The Center Column**
- 8. Testing The Centre Column Swing**
- 9. Elevation Diagrams**
- 10. Mechanism Diagram (Parts List)**
- 11. Electrical Testing Procedure**
- 12. Maintenance Guide**
- 13. Warranty**

3000 SERIES HIGH GATE, PARTS CHECK

1. Once you have removed all the parts from the skid, remove envelope from the top of the cabinet. This envelope will contain the keys for the cabinet and instructions. Remove all components from the inside of the cabinet. (Center Base, Anchoring Hardware And Additional Instruction Manual)

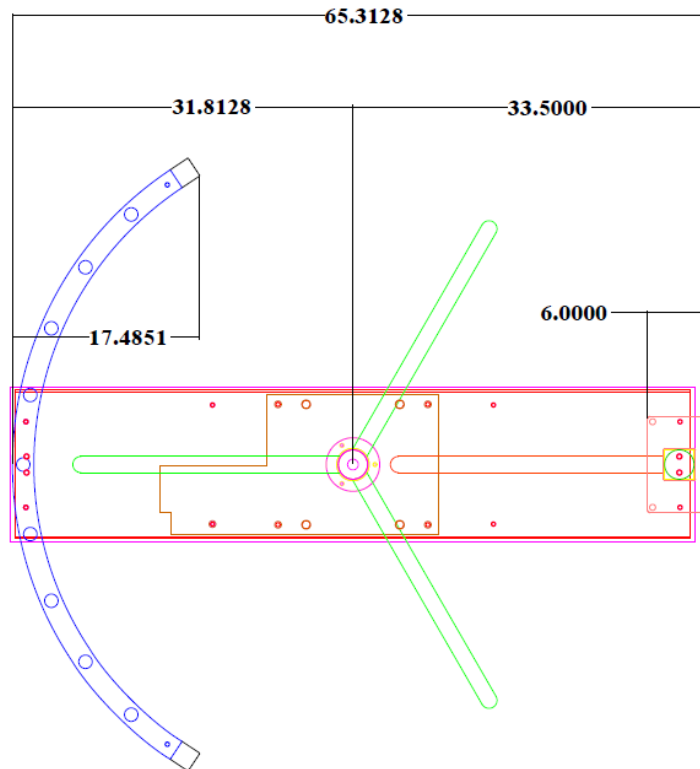


2. Open Instruction Manual to "Floor Layout". Located on the next page, and with a chalk line, locate and find desired High Gate location, as per "Site Drawings".



3. Mark and layout location of the King Post, centre Base Plate and Cage. Align all pieces in place and with a marker, mark location of Anchor holes. Begin by drilling the anchor holes (1/2" hole size) and drill to a depth of 3 to 4 inches. Remove all concrete dust and debris from the holes created and begin to set anchors in place. (Please review anchoring diagram).



SINGLE HIGH GATE FLOOR LAYOUT**TURNSTILE SECURITY
SYSTEMS INC.**

40 ERIN PARK DRIVE, ERIN, ONTARIO, N0B 1T0
PHONE: 888 371-2222 FAX: 888 371-7922

HIGH TURNSTILE FLOOR LAYOUT

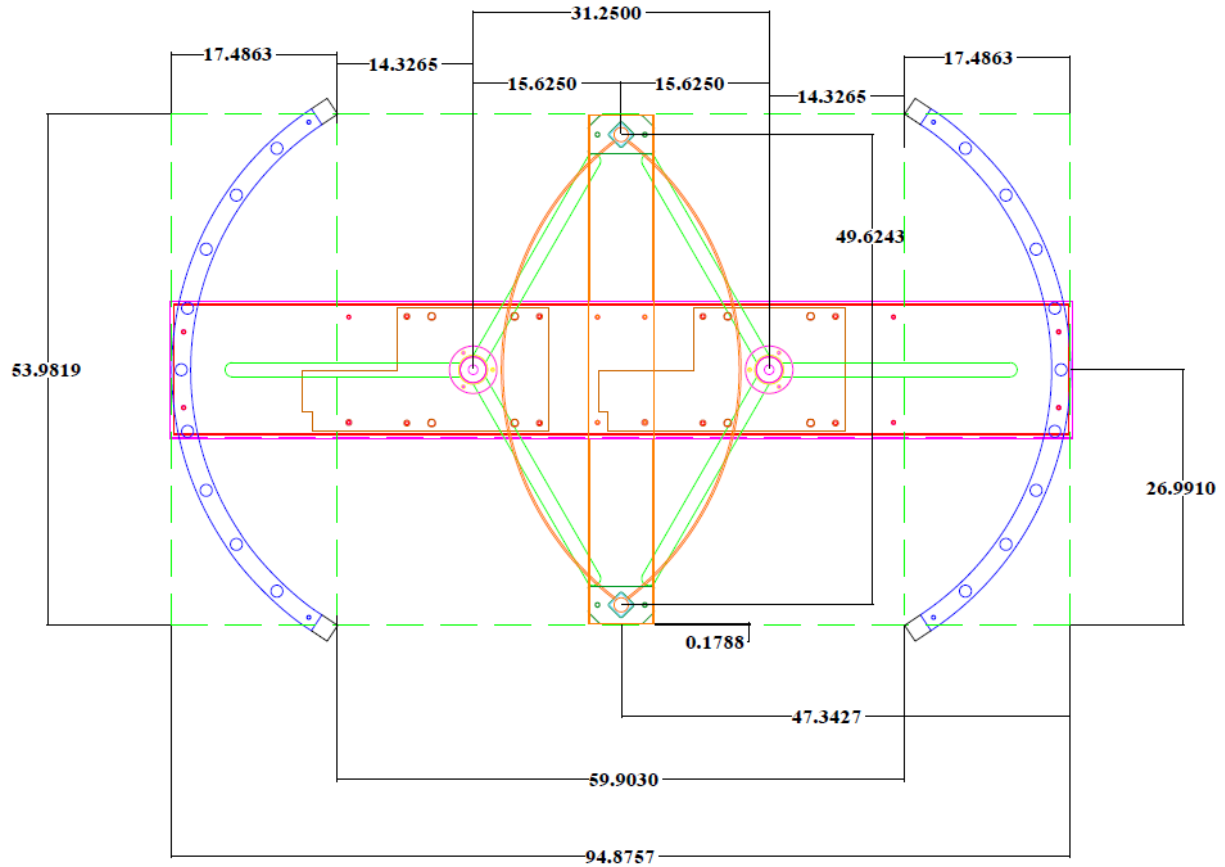
DATE: AUGUST 6, 2008

REVISED DATE:

DRAWN BY: RJM

APPROVED BY:

APPROVAL
DATE:

TANDEM HIGH GATE FLOOR LAYOUT**TURNSTILE SECURITY
SYSTEMS INC.**

40 ERIN PARK DRIVE, ERIN, ONTARIO, N0B 1T0
PHONE: 888 371-2222 FAX: 888 371-7922

TANDEM FLOOR LAYOUT

DATE: AUGUST 6, 2008

REVISED DATE:

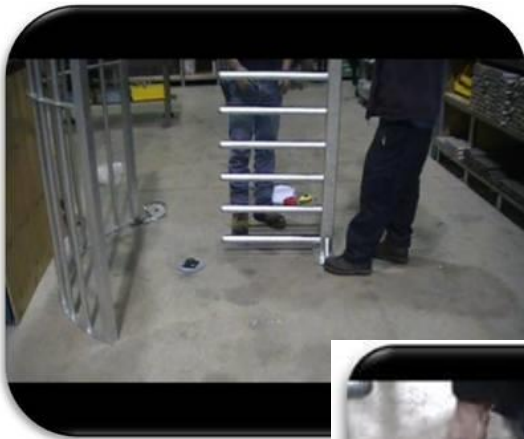
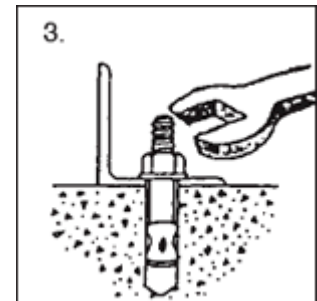
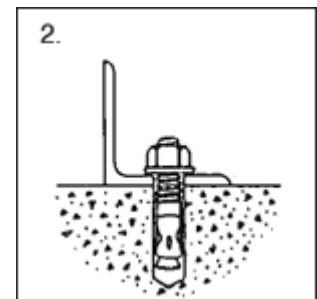
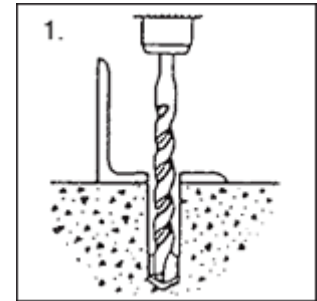
DRAWN BY: RJM

APPROVED BY:

APPROVAL
DATE:

ANCHORING; USING WEDGE ANCHORS

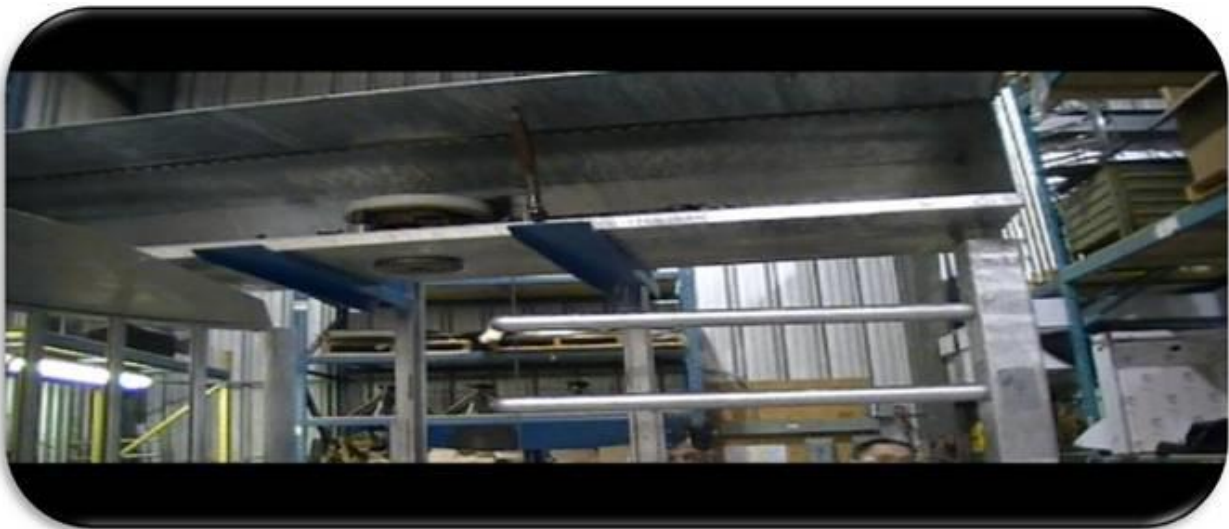
- Mark and drill hole locations (1/2" hole, 3" to 4" down)
- Clean holes
- Hammer anchors into the floor, leaving 1 1/2" showing.
- Place King Post, Cage and Centre Column base onto anchors.
- Hammer down anchors until completely flush
- Tighten until completely secure.
- With a level, check the king Post and Outer Cage for level.
- Using shim stock (1/2" wide) shims the King Post and Outer Cage until completely level.
- Place Centre Column base flange, over base plate and insert "Lower" Center Column Plate.



PREPARING THE UPPER CABINET FOR PLACEMENT

Undo all surface mounting bolts, from the inside of the cabinet.

Using a lift Genie, forklift or manually. Lift the cabinet assembly up and into home position, making sure the King Post plug fits securely into the top of the King Post.



SECURING THE CABINET



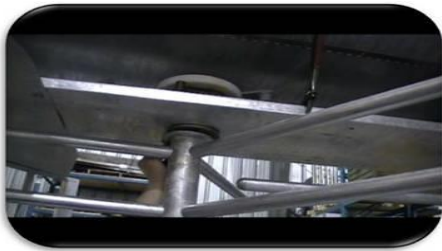
Replace all surface mounting back into the locations they were removed from.

AT THIS POINT MAKE SURE THAT ALL BOLTS AND ANCHORS ARE FIRMLY SECURED EVERYWHERE ON THE UNIT.

MOUNTING THE CENTER COLUMN



Lift the centre column into place



Using the 5/16" Allen cap bolts
(Provided) bolt the centre column to the
top of the Turnstile Cabinet **FIRST**



Then bolt the bottom of the centre
column to the base plate.

TESTING THE CENTRE COLUMN SWING

Each High Gate Turnstile is pre-tested in shop, to make sure that the Hydraulic closure has a slow closing speed. (Figure1)

The Hydraulic closure is located inside the cabinet and can easily be adjusted to swing closed at a quicker rate. (Figure2)



Figure 1

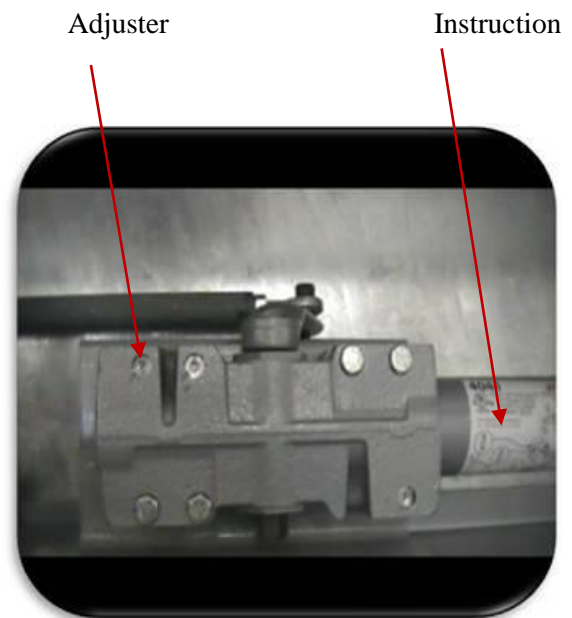
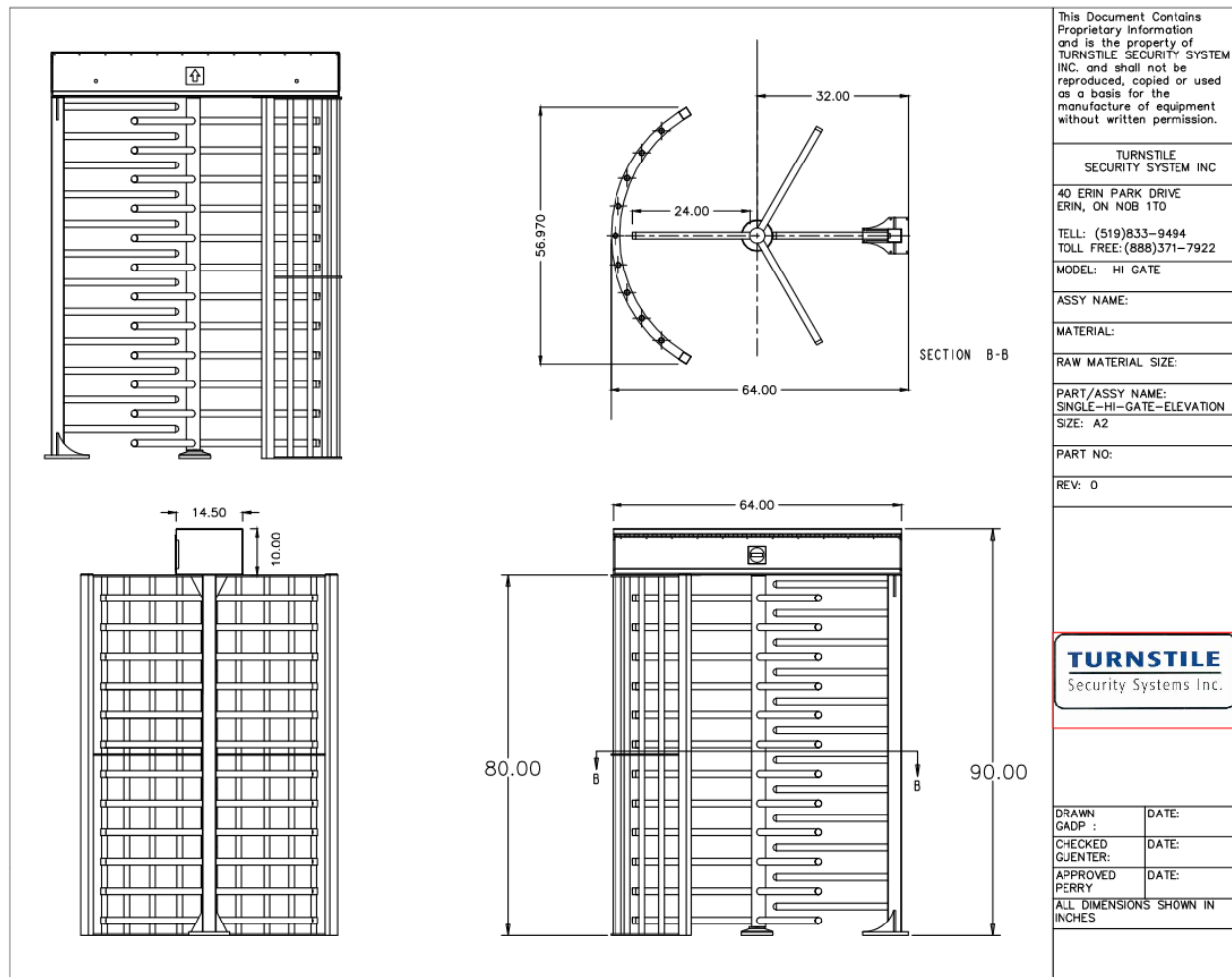
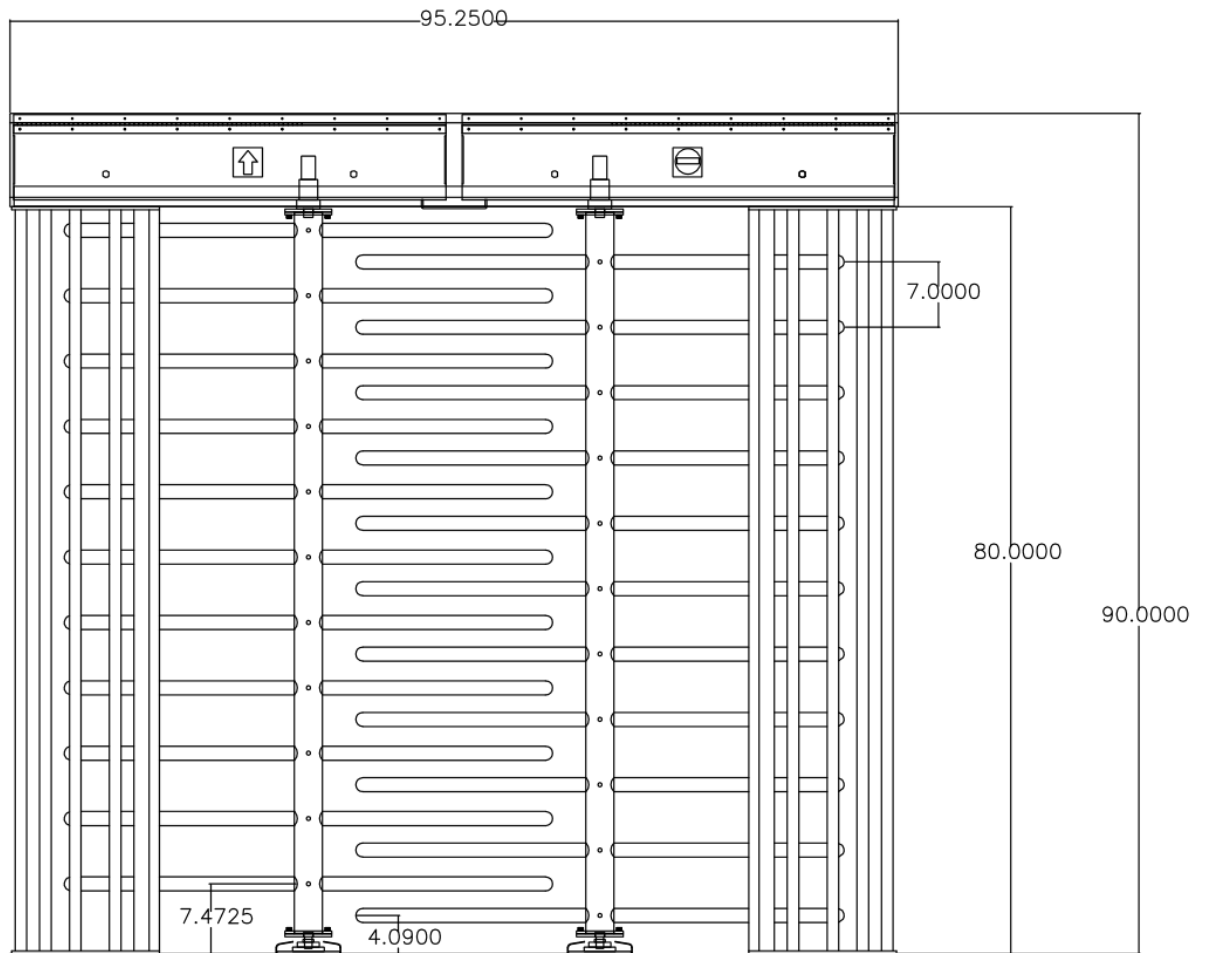
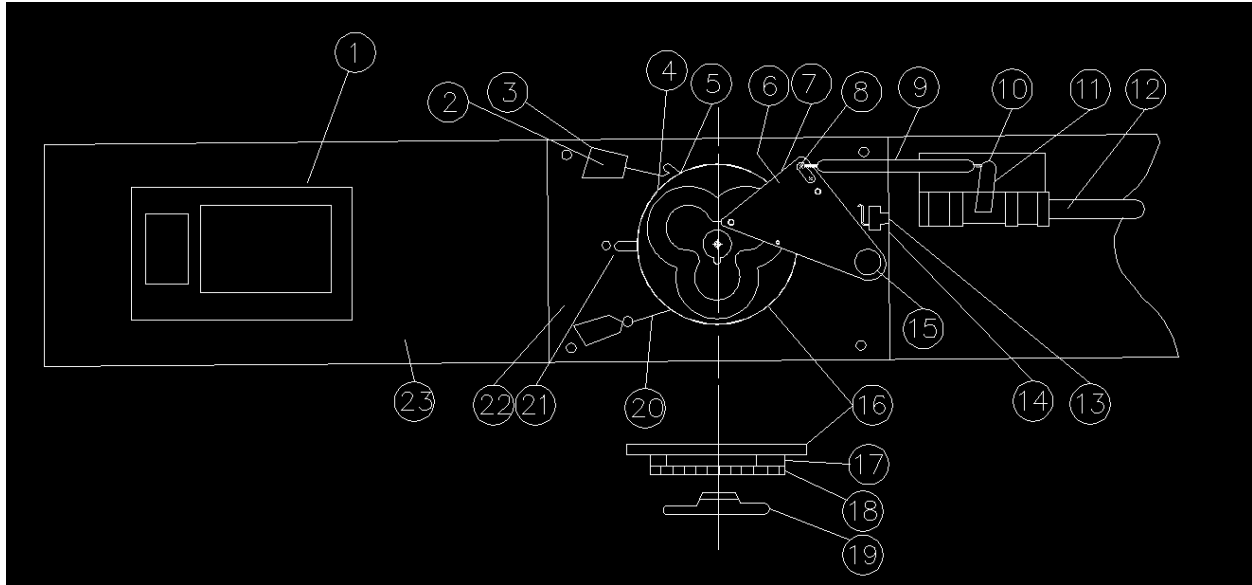


Figure 2

ELEVATION**SINGLE HIGH GATE**



TANDEM HIGH GATE

MECHANISM PLATE

ITEM	PART NO.	PART NAME
1	3000-01	CONTROL BOARD
2	3000-02	SOLENOID
3	3000-03	SOLENOID BRACKET
4	3000-04	LOCKING PAWL (RH OR LH)
5	3000-05	LOCKING PAWL BUSHING
6	3000-06	INDEXING ARM
7	3000-07	ROLLER BEARING
8	3000-08	ROLLER BEARING ADJUSTER PLATE
9	3000-09	CLOSURE ROD
10	3000-10	EYE BOLT
11	3000-11	CLOSURE ROD
12	3000-12	CLOSURE
13	3000-13	MICROSWITCH BRACKET
14	3000-14	MICROSWITCH
15	3000-15	INDEXING ARM BUSHING
16	3000-16	DELFIN CAM
17	3000-17	LOCKING PLATE
18	3000-18	RATCHETING PLATE
19	3000-19	UPPER BEARING
20	3000-20	LOCKING SPRING
21	3000-21	RATCHETING PAWL ASSEMBLY
22	3000-22	MECHANISM PLATE
23	3000-23	MAIN PLATE

ELECTRICAL TESTING PROCEDURE

Once all components for the 3000 Series High Gate have been installed and all wiring has been tied together to the control board (Located inside the Cabinet) each unit is supplied with a dry contact wire attached to the control box for testing.

1. Make sure power connection is live and that the control board is plugged in.
2. Locate the dry contact line (Tagged)
3. Once you strike the contact lines together the solenoid on one side should release.
4. Locate micro-switch or "Limit Switch" located adjacent to the solenoid section of the mechanism.
5. Once you have located it, strike the contact lines together and immediately press the Micro-switch. (The effect will be) strike the contact lines: the solenoid activates, pressing the micro-switch: re-engages the solenoid.
6. Reset this by turning the centre column (preferably with someone walking through) you should find that within 10 to 15 degrees of the rotation, the solenoid will already be re-locked.

MAINTENANCE GUIDE

All pivot points on the 3000 Series High Gates, have Bronze, Oil impregnated bushings, and therefore the amount of Maintenance is minimal. However there are 2 main bearing that may require re-greasing periodically.



THE LOWER BEARING is attached to the base plate for the centre column.

It has a grease nipple, which can be access for maintenance. (Figure3)

Figure 3



THE UPPER BEARING is located inside the cabinet, the very centre of the mechanism. It is fixed to the upper centre column.

It has a grease nipple, which can be accessed for maintenance. (Figure 4)

Figure 4

WARRANTY

All Turnstile Security Systems products are warranted against defects in material and workmanship for a period of 18 months from the date of shipping. We will repair or replace at our discretion any defective product provided it is returned undamaged to our factory.

Freight to be paid at **CUSTOMER'S EXPENSE**, please contact our Service Department, before returning the product.

Beyond warranty period, we will offer replacement parts or Factory Service at reasonable rates.

service@turnstilesecurity.com

Or call Toll free

1-888-371-2222