

## CART BUMPERS



## SCOPE OF OPERATION

- Cart bumper and Case / Corner Protector Products were developed to help protect refrigeration units, walls and displays from shopping cart damage.

## MATERIALS

All materials meet the ASTM standards as set forth by the materials industry.

- Cart bumpers are made of 2" X 2" 16 gauge steel and are fabricated with two support legs for installation.
- Wall mount cart bumpers are made of 1" X 2" 16 gauge steel.
- Corner Protectors are made of 3/8" thick structural wall tubing and are manufactured with mounting hidden mounting flanges for installation.
- Case protectors are 16 gauge stainless steel and come with heavy wall aluminum floor inserts.

## FINISHES

- Bright Chrome Finish.
- Satin Chrome Finish.
- Powder Coat Paint Finish.

## OPTIONS

### CART BUMPERS

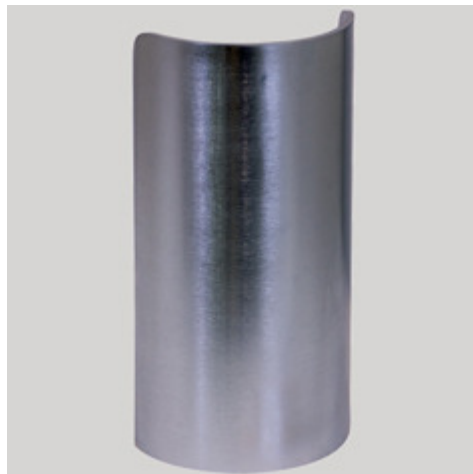
- Cart bumpers are available in custom lengths, longest not exceeding 118”.
- Cart bumpers can be accompanied with additional legs for stronger support.
- Wall mount cart bumpers can be ordered with mounting holes pre- drilled with ½” snap covers. 2’, 3’, and 6’ rails are standard length for custom design configurations.

### CORNER PROTECTORS

- Available with back hidden mounting flange.
- 10” or 12” height.

### CASE PROTECTORS

- Sockets are cored into the floor. Case protectors are easily removed for floor cleaning.
- Overall height is 28”. Core height is 4”.



**CORNER PROTECTOR**



**CASE PROTECTOR**