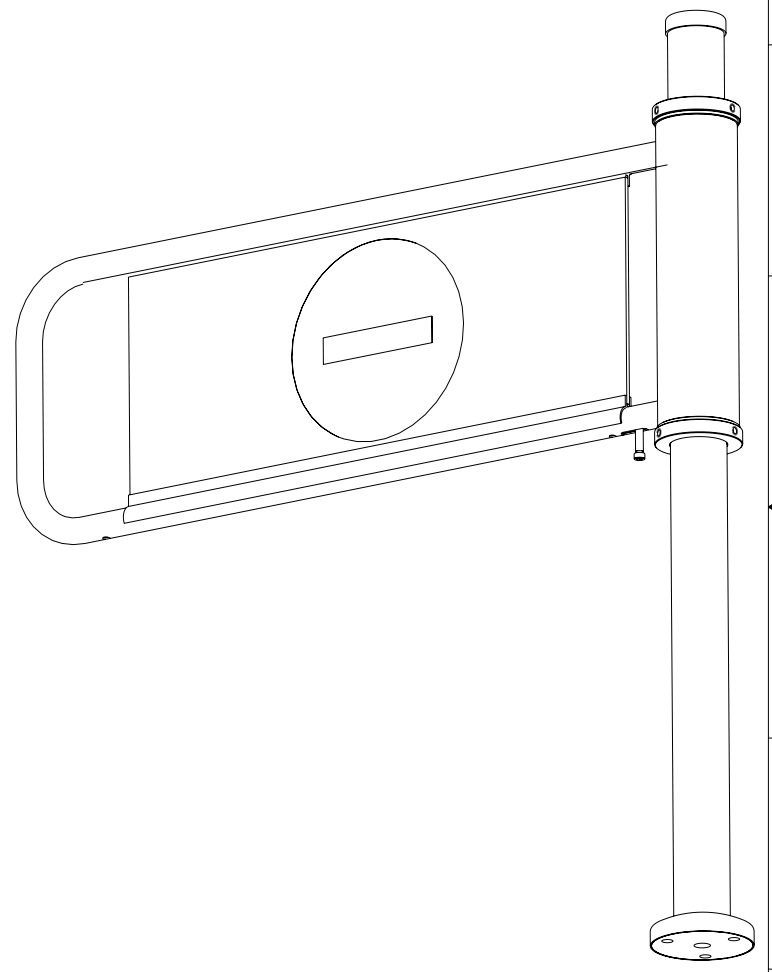
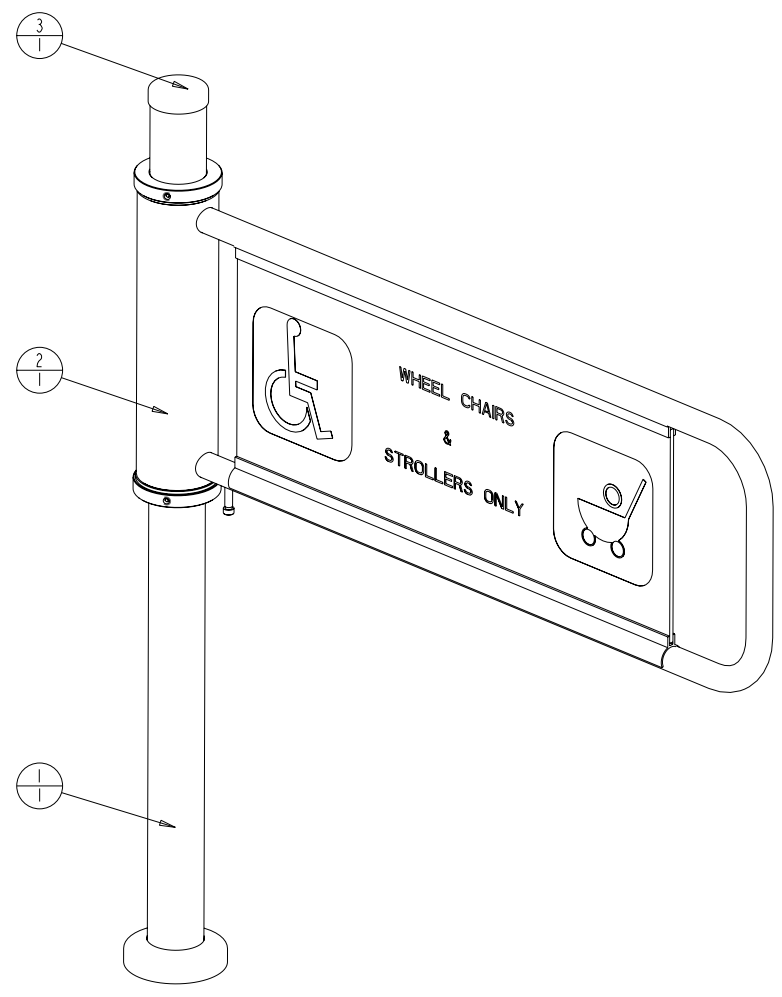


This Document Contains Proprietary Information and is the property of TURNSTYLE SECURITY SYSTEMS INC., and shall not be reproduced, copied, or used as a basis for the manufacture of equipment without written permission.

PARTS LIST

ITEM	PART NO.	DESCRIPTION	MODEL NAME	RAW MATERIAL SIZE	VENDOR INFO	QTY
1	HAND-200	POST ASSY	HANDICAPPED-GATE-POST-ASSY	SEE PART DRG		1
2	HAND-300	SWING ARM ASSY	HANDICAPPED-GATE-SWING-ARM-ASSY	SEE PART DRG		1
3	HAND-400	TOP CAP	HANDICAPPED-GATE-TOP-CAP	16 GA		1

REVISIONS				
ZONE	REV	DESCRIPTION	DATE	ECN
	01	INITIAL RELEASE	--/03	DG



STANDARD TOLERANCES UNLESS SPECIFIED	
x.x	±0.020
x.xx	±0.010
x.xxx	±0.005
HOLES	±0.003
ANGLES	±1/2°

DRAWN GADP	DATE 09-Oct-03
CHECKED GUENTER	DATE
APPROVED PERRY	DATE
ALL DIMENSIONS SHOWN IN INCHES	

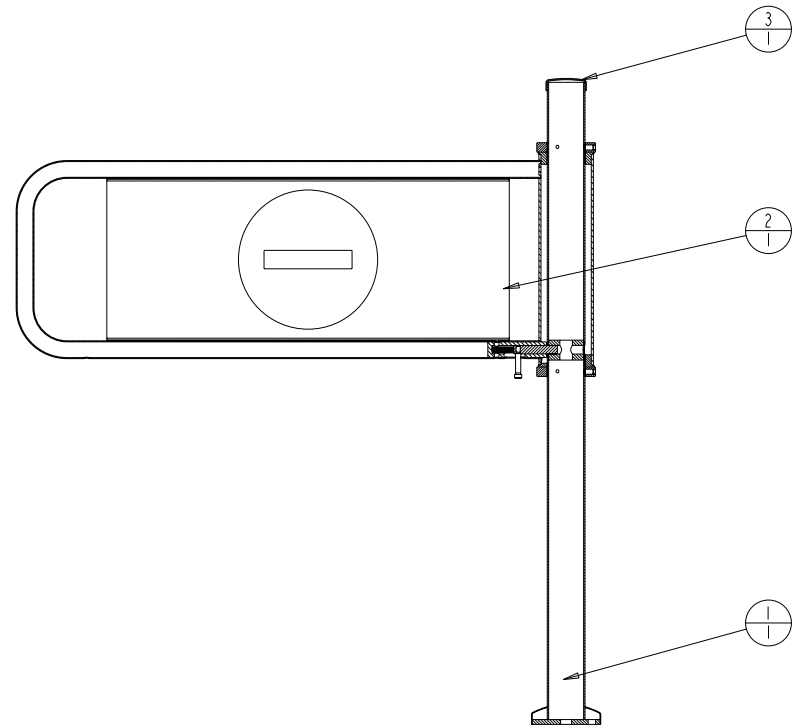
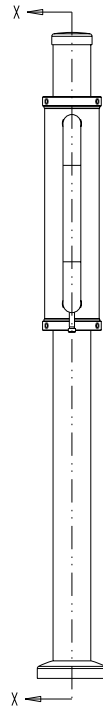
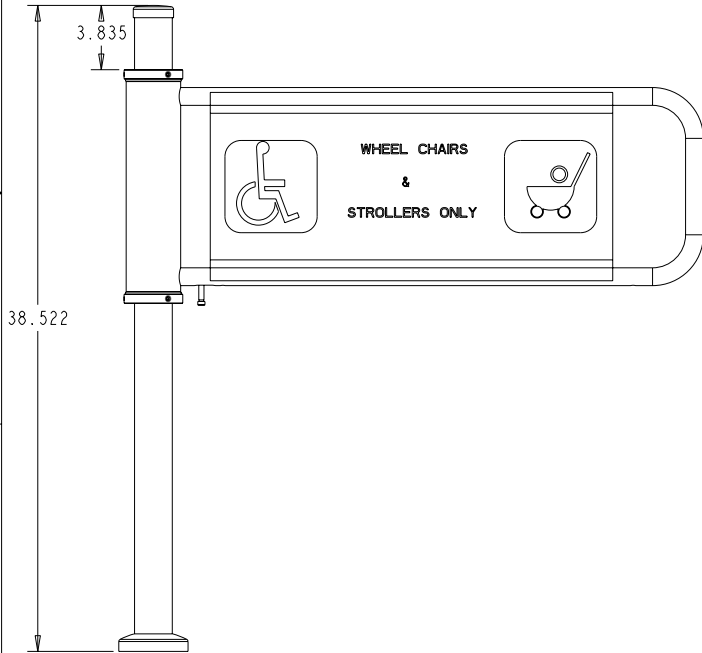
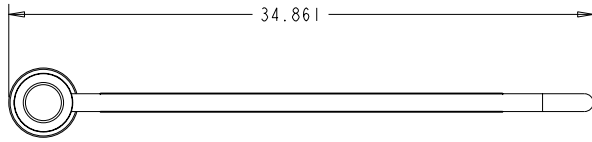
TURNSTYLE SECURITY SYSTEMS INC
 245, Matheson Blvd. E. Mississauga, Ontario, L4Z 3C9 CANADA
 TEL: (905) 890-2222 FAX: (905) 890-3786

PART NO.: HAND-100 CAD FILE: HANDICAPPED-GATE-MAIN-ASSY.DRW	
MODEL TYPE: HANDICAPPED	
TITLE HANDICAPPED-GATE-MAIN-ASSY	
PART/ASSY NAME: HANDICAPPED-GATE-MAIN-ASSY	
SIZE A2	MATERIAL: SEE PART DRG
SCALE 3.00	SHEET 1 OF 5

This Document Contains Proprietary Information and is the property of TURNSTILE SECURITY SYSTEMS INC. and shall not be reproduced, copied, or used as a basis for the manufacture of equipment without written permission.

PARTS LIST

ITEM	PART NO.	DESCRIPTION	MODEL_NAME	RAW MATERIAL SIZE	VENDOR INFO	QTY
1	HAND-200	POST ASSY	HANDICAPPED-GATE-POST-ASSY	SEE PART DRG		1
2	HAND-300	SWING ARM ASSY	HANDICAPPED-GATE-SWING-ARM-ASSY	SEE PART DRG		1
3	HAND-400	TOP CAP	HANDICAPPED-GATE-TOP-CAP	16 GA		1



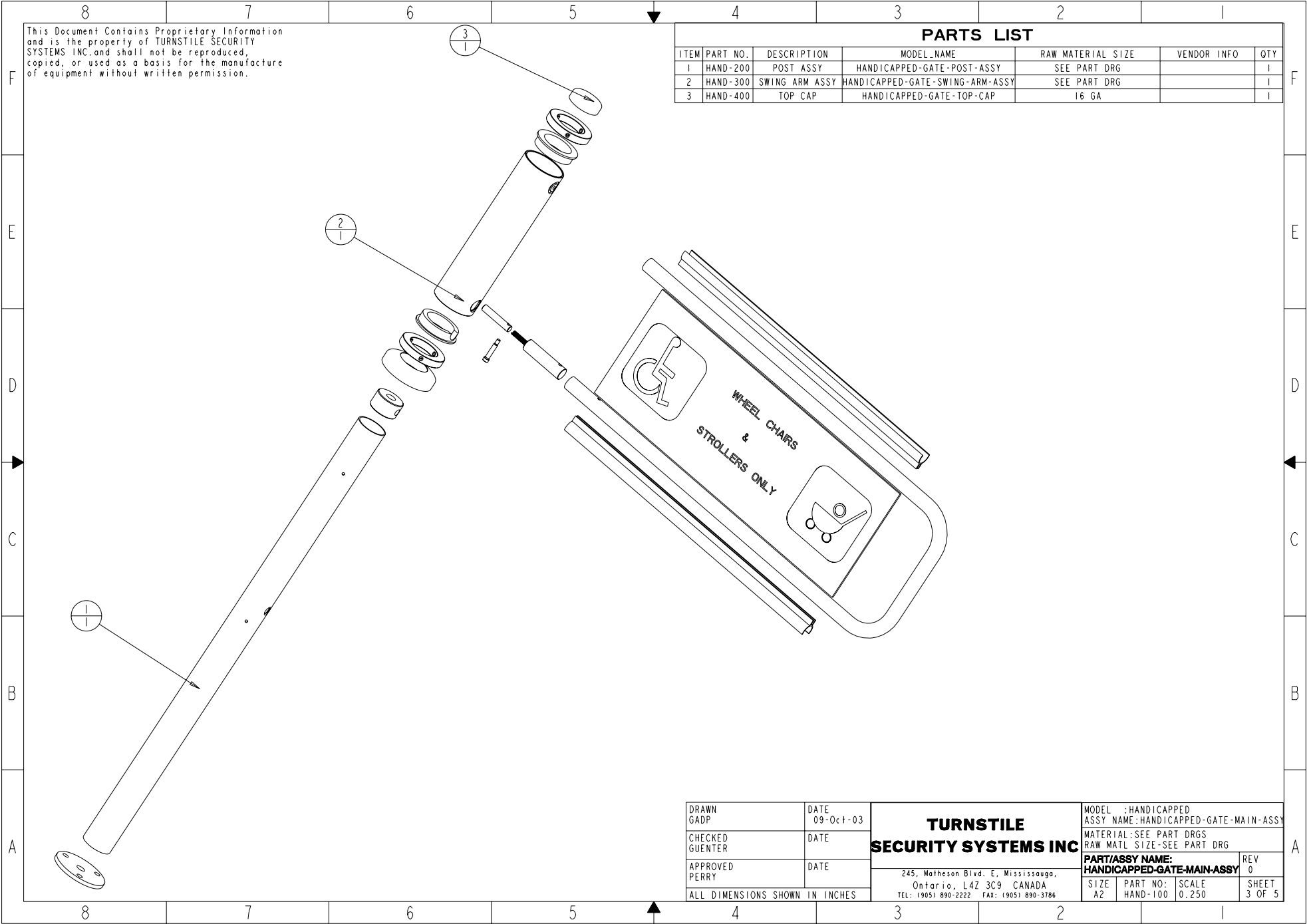
SECTION X-X

DRAWN GADP	DATE 09-Oct-03	TURNSTILE SECURITY SYSTEMS INC	MODEL : HANDICAPPED ASSY NAME: HANDICAPPED-GATE-MAIN-ASSY	
CHECKED GUENTER	DATE		MATERIAL: SEE PART DRGS RAW MATL SIZE-SEE PART DRG	
APPROVED PERRY	DATE	PART/ASSY NAME: HANDICAPPED-GATE-MAIN-ASSY		REV 0
ALL DIMENSIONS SHOWN IN INCHES		245, Matheson Blvd. E, Mississauga, Ontario, L4Z 3C9 CANADA		SHEET 2 OF 5
		TEL: (905) 890-2222 FAX: (905) 890-3786		SCALE 0.200

This Document Contains Proprietary Information and is the property of TURNSTILE SECURITY SYSTEMS INC. and shall not be reproduced, copied, or used as a basis for the manufacture of equipment without written permission.

PARTS LIST

ITEM	PART NO.	DESCRIPTION	MODEL NAME	RAW MATERIAL SIZE	VENDOR INFO	QTY
1	HAND-200	POST ASSY	HANDICAPPED-GATE-POST-ASSY	SEE PART DRG		1
2	HAND-300	SWING ARM ASSY	HANDICAPPED-GATE-SWING-ARM-ASSY	SEE PART DRG		1
3	HAND-400	TOP CAP	HANDICAPPED-GATE-TOP-CAP	16 GA		1



DRAWN GADP	DATE 09-Oct-03	TURNSTILE SECURITY SYSTEMS INC	MODEL : HANDICAPPED ASSY NAME: HANDICAPPED-GATE-MAIN-ASSY
CHECKED GUENTER	DATE		MATERIAL: SEE PART DRGS RAW MATL SIZE-SEE PART DRG
APPROVED PERRY	DATE	245, Matheson Blvd. E, Mississauga, Ontario, L4Z 3C9 CANADA TEL: (905) 890-2222 FAX: (905) 890-3786	PART/ASSY NAME: HANDICAPPED-GATE-MAIN-ASSY
ALL DIMENSIONS SHOWN IN INCHES			SIZE A2

This Document Contains Proprietary Information and is the property of TURNSTILE SECURITY SYSTEMS INC. and shall not be reproduced, copied, or used as a basis for the manufacture of equipment without written permission.

PARTS LIST

ITEM	PART NO.	DESCRIPTION	MODEL NAME	TYPE	RAW MATERIAL SIZE	VENDOR INFO	QTY
1	HAND-200	POST ASSY	HANDICAPPED-GATE-POST-ASSY	ASSEMBLY	SEE PART DRG	SEE PART DRG	1
	HAND-201	FLANGE	HANDICAPPED-GATE-FLANGE	PART	-	-	1
	HAND-202	POST	HANDICAPPED-GATE-POST	PART	DIA2.375 X 0.12WALL(16GA)DOM	FOR PLATING	1
	HAND-203	PLUG	HANDICAPPED-GATE-PLUG	PART	DIA 3-1/4 ROD	FOR PLATING	1
	HAND-204	FLANGE COVER	HANDICAPPED-GATE-FLANGE-COVER	PART	16 GA-	FOR FORMING AND PLATING	1
2	HAND-300	SWING ARM ASSY	HANDICAPPED-GATE-SWING-ARM-ASSY	ASSEMBLY	SEE PART DRG	-	1
	HAND-301	OUTER SLEEVE	HANDICAPPED-GATE-OUTER-SLEEVE	PART	3-1/4 X 1/8 WALL DOM 2	FOR PLATING	1
	HAND-302	SWING ARM	HANDICAPPED-GATE-SWING-ARM	PART	1-1/16 CRW 16 GA	-	1
	HAND-303	LOCK ASSY	HANDICAPPED-GATE-LOCK-ASSY	ASSEMBLY	SEE PART DRG	-	1
	HAND-304	GATE PROFILE	HANDICAPPED-GATE-PROFILE	PART	STANDARD	STANDARD	2
	HAND-305	SIGN PLATE	HANDICAPPED-GATE-SIGN-PLATE	PART	3/16 THK	FOR SCREEN PRINTING	1
	HAND-307	HYLATRON GSM-TOP	HANDICAPPED-GATE-HYLATRON-TOP	PART	3-1/4IN OD X 2IN ID	-	1
	HAND-307	HYLATRON GSM-TOP	HANDICAPPED-GATE-HYLATRON-BOT	PART	3-1/4IN OD X 2IN ID	-	1
	HAND-308	COLLAR	HANDICAPPED-GATE-COLLAR	PART	DIA 2-1/4 IN	FOR PLATING	2
	HAND-309	CONE SCREW	CONE-SET-SCREW	PART	5/16-18 X 5/8	-	6
3	HAND-400	TOP CAP	HANDICAPPED-GATE-TOP-CAP	PART	16 GA	FOR PLATING AND FORMING	1

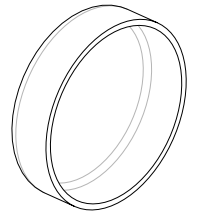
DRAWN GADP	DATE 21-Oct-03
CHECKED GUENTER	DATE
APPROVED PERRY	DATE
ALL DIMENSIONS SHOWN IN INCHES	

**TURNSTILE
SECURITY SYSTEMS INC**

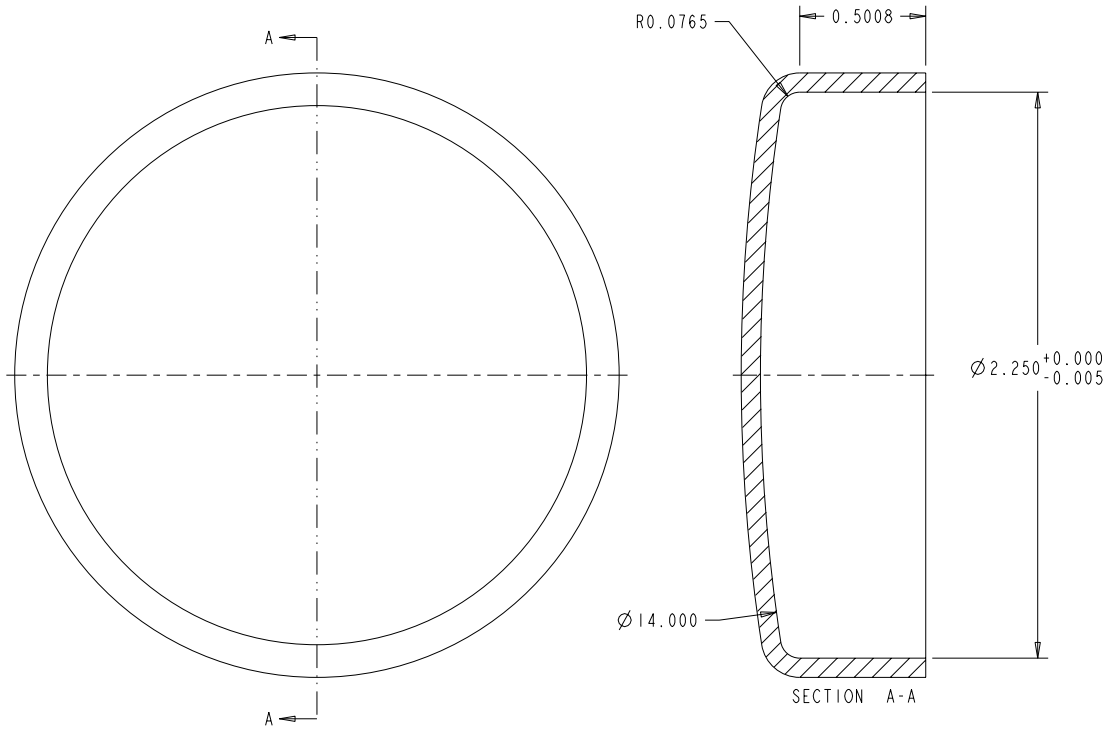
245, Matheson Blvd. E, Mississauga,
Ontario, L4Z 3C9 CANADA
TEL: (905) 890-2222 FAX: (905) 890-3786

MODEL : HANDICAPPED ASSY NAME: HANDICAPPED-GATE-MAIN-ASSY			
MATERIAL: SEE PART DRGS RAW MATL SIZE-SEE PART DRG			
PART/ASSY NAME: HANDICAPPED-GATE-MAIN-ASSY			REV 0
SIZE A2	PART NO: HAND-100	SCALE 0.300	SHEET 4 OF 5

This Document Contains Proprietary Information and is the property of TURNSTILE SECURITY SYSTEMS INC. and shall not be reproduced, copied, or used as a basis for the manufacture of equipment without written permission.



SCALE 1.00



NOTE:
SHEET THICKNESS= 0.077

FINISH	MPDNC
DRILL_JIG	N/A
WELD_FIXTURE	N/A
VENDOR	FOR PLATING AND FORMING

DRAWN GADP	DATE 21-Oct-03
CHECKED GUENTER	DATE
APPROVED PERRY	DATE
ALL DIMENSIONS SHOWN IN INCHES	

**TURNSTILE
SECURITY SYSTEMS INC**

245, Matheson Blvd. E, Mississauga,
Ontario, L4Z 3C9 CANADA
TEL: (905) 890-2222 FAX: (905) 890-3786

MODEL : HANDICAPPED ASSY NAME: HANDICAPPED-GATE-MAIN-ASSY			
MATERIAL: CRS RAW MATL SIZE-16 GA			
PART/ASSY NAME: HANDICAPPED-GATE-TOP-CAP			REV 0
SIZE A2	PART NO: HAND-400	SCALE 3.000	SHEET 5 OF 5