

# 2014

## AUTO SWING GATE INSTALLATION GUIDE



### TURNSTILE SECURITY SYSTEMS Inc.

THIS CATALOGUE IS MEANT AS REFERENCE MATERIAL FOR TURNSTILE SECURITY SYSTEMS Inc. FOR THE SOLE PURPOSE OF INFORMING POTENTIAL CUSTOMER OF FEATURE, ADVANTAGES AND BENEFITS OF TURNSTILE SECURITY SYSTEMS PRODUCTS.

7/16/2014

**COMPONENT IN PACKAGE**

**Gate Key**

**Wiring X 2**

**(Power cord & small 2 wire)**

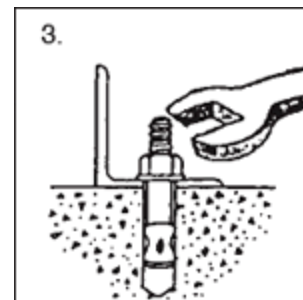
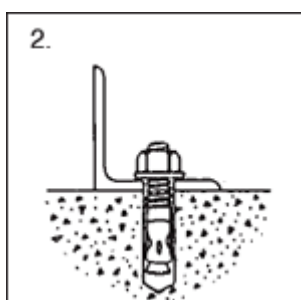
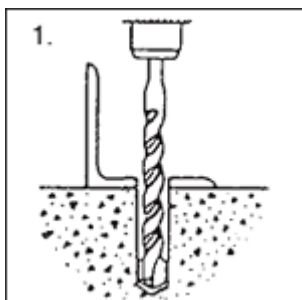
**Remote**

**Anchors**



### INSTALLATION

- Using a chalk line, find preferred location for the Auto Gate.
- Set up gate so that the gate arm is running straight with the alignment of the chalk line.
- Lift flange and mark location for four anchor positions. (The flange has elongated slots for anchor positioning.)
- Remove gate and hammer drill for 3/8" anchors.
- Hammer anchors into the floor, leaving 1-1/2" exposed and place gate onto position.
- Place washers over the anchors, screw on the nuts until flush with the head of the anchor, and continue hammering the anchors into the floor until the gate is secure.
- Making certain the gate is in proper alignment.
- Begin tightening the anchors until the gate is properly secured.
- Cut and use shim stock (provided in box) under the base flange to correct leveling when necessary.



### WIRING AFTER GATE INSTALLATION

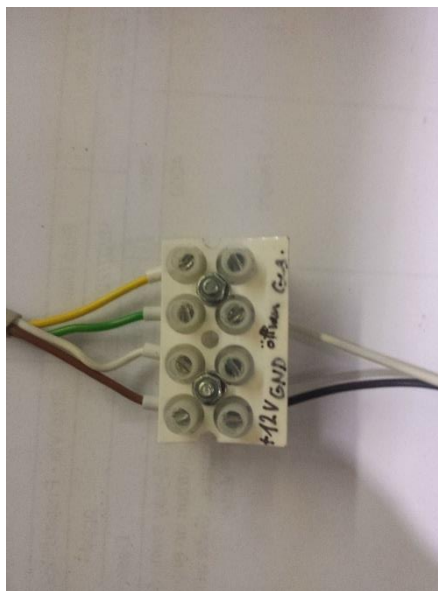
Each gate comes with a 110 power wire and a secondary Gray colored 2 wire.

This wire is marked with a tag that says (Dry Contact).

This gray wire is to be connected to the Push Button Release.

Connect these wires together, color to color.

Once you have connected these wires, you can proceed to turning the unit on.



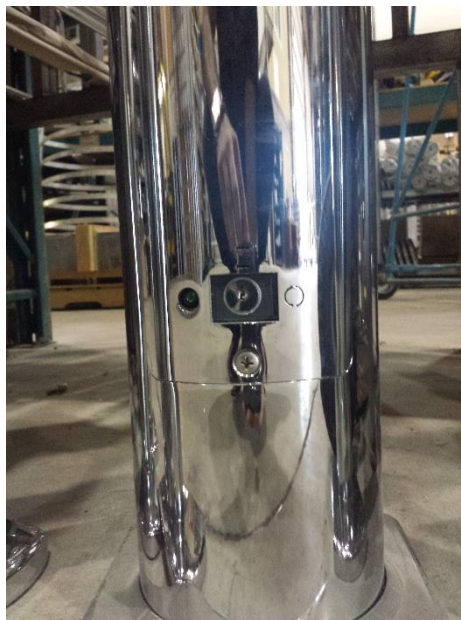
### NEXT STEPS: TURNING ON

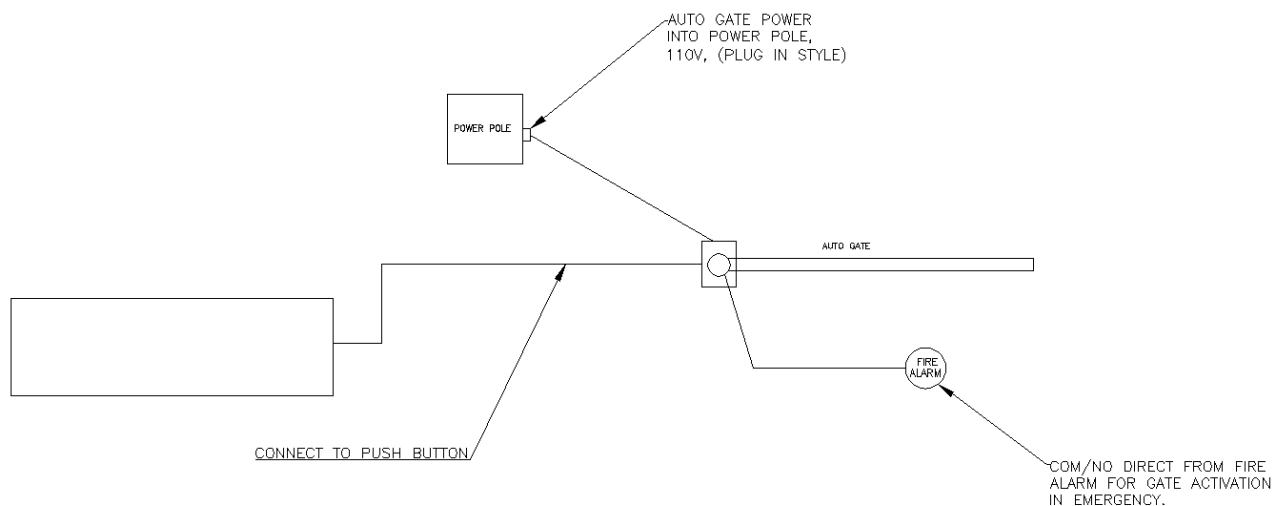
Plug in Auto Gate.

Turn override shut off key, to “On” position. (The red LED will come on)

Using Key Remote, located in the cardboard box, press the button and test gate.

NOTE: it takes a few moments for the Gate memory to activate (10 to 20 seconds)





## METHOD OF OPERATION

Push Button sends Dry Contact to Activation to Auto Gate Contact. Auto Gate Opens.

### POWER:

The Auto Gate Operator will be powered by plugging into the power pole/receptacles.

(No hard wiring unless required)

### FIRE ALARM:

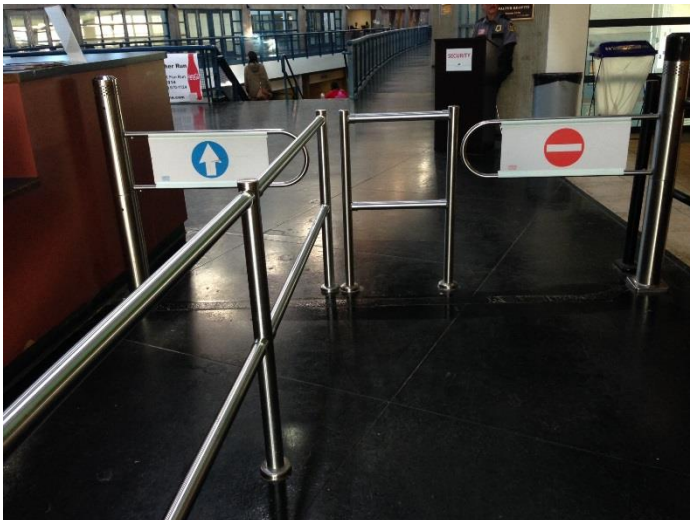
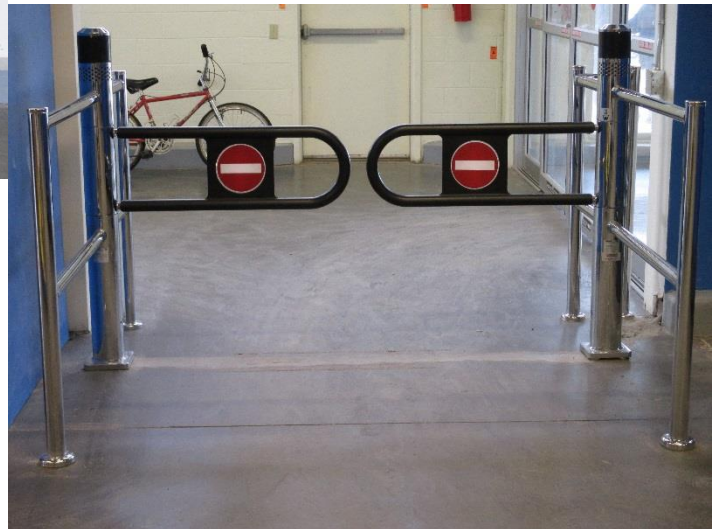
When Fire Alarm is triggered, it will close the contact for the gate allowing the gate to remain open until fire alarm is deactivated.

### WIRING RECOMMENDATIONS:

For COM/NO, Dry Contact wires from Push Button and fire alarm, use 2/C 18/16 stc gauge wire.



## ENTRANCE AND EXIT SYSTEMS



## ELECTRICAL

- The gates are already pre-programmed.  
All that is needed, is to get power to the units, power supply.
- Unscrew transformer face plate, located at the base of the Gate. (Fig 1)
- Reveal Transformer. (Fig 2)
- Plug in “Right Angle” plug. (Fig 3)  
Provided.
- In most cases, a BX cable will be coming in along the conduit trench. In this case there is a “Right Angle” wire fitting, provided, inside the Hardware package marked **“keys”**.
- This right angle fitting can be used in this situation.



Figure 1



Figure 2



Figure 3

## TESTING

- Using the Keys (Provided) Turn the key switch to the “On” position.
- Allow 3 to 5 minutes for the Gates Programming memory to start.
- Within minutes the gates will become active in the “Home Position”
- When you approach the gates, the sensors will detect your presence and the gate will open automatically.
- After this test, approach the gates from the exit direction. (FIG 5)
- Once your are inside the Detection zone. The sensor will detect your presence and sound an Alarm. Alarm will stop moments after you remove yourself from the Detection zone.
- Furthermore, if you are inside the detection zone and try to manipulate the gate arm, (To sneak out) a second more audible Alarm will sound.



Figure 4

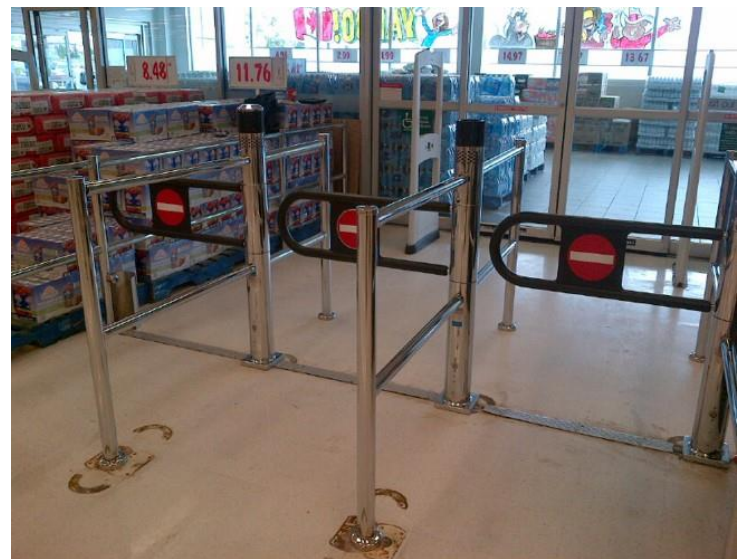
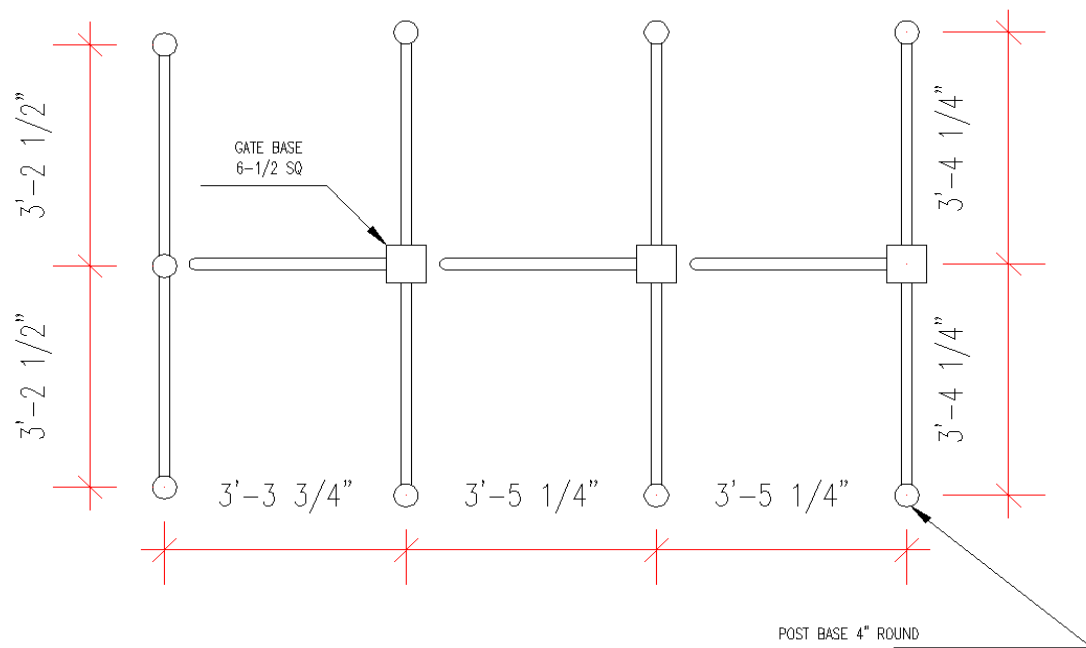
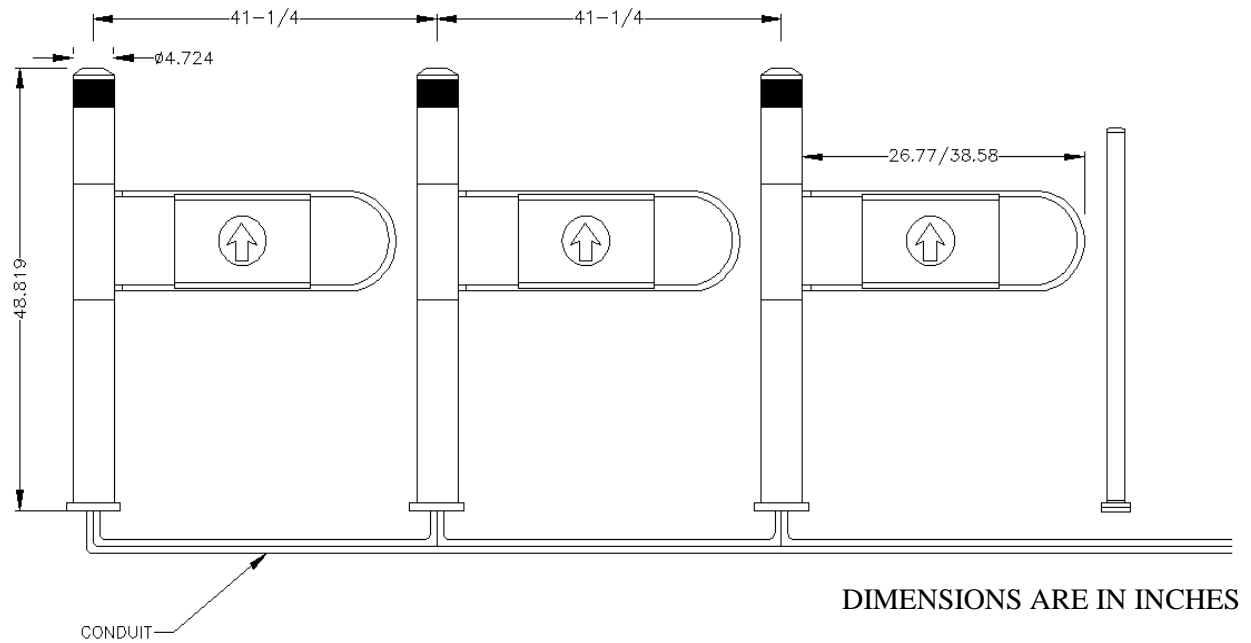


Figure 5

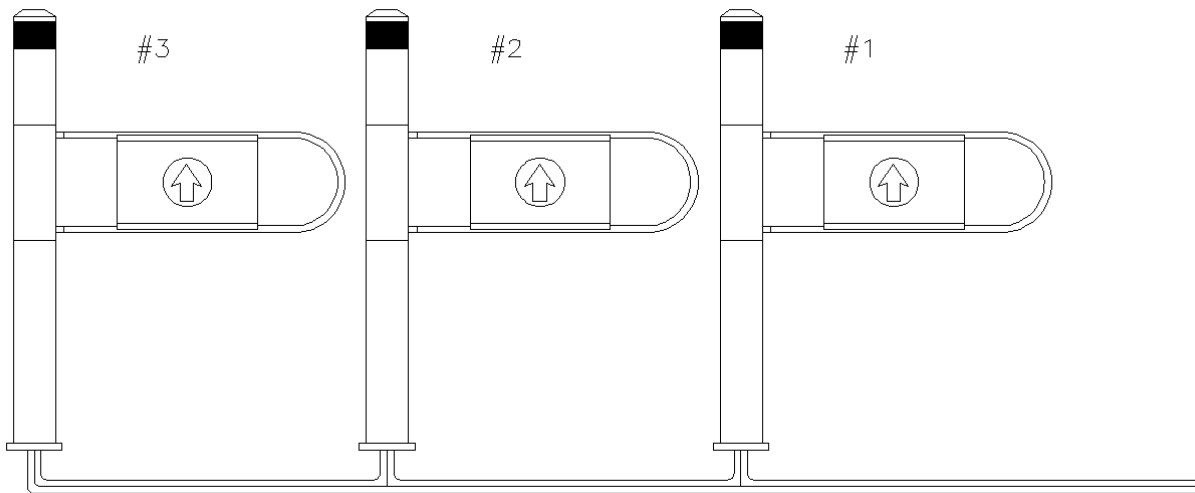


**CONDUIT PLAN**

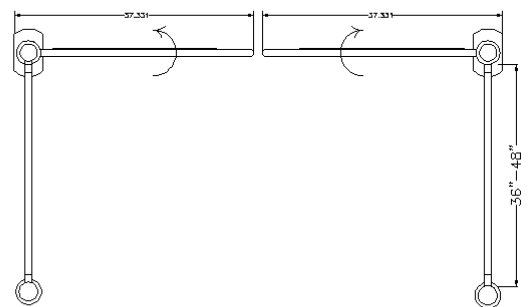
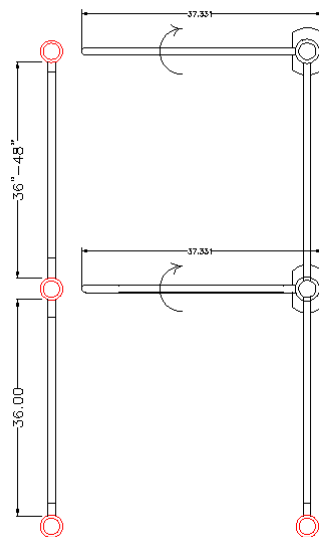
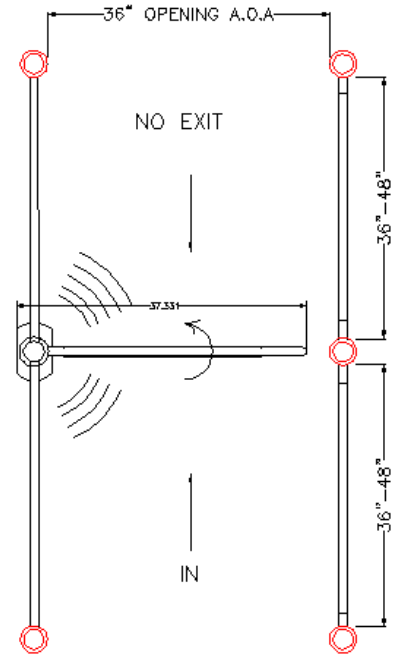
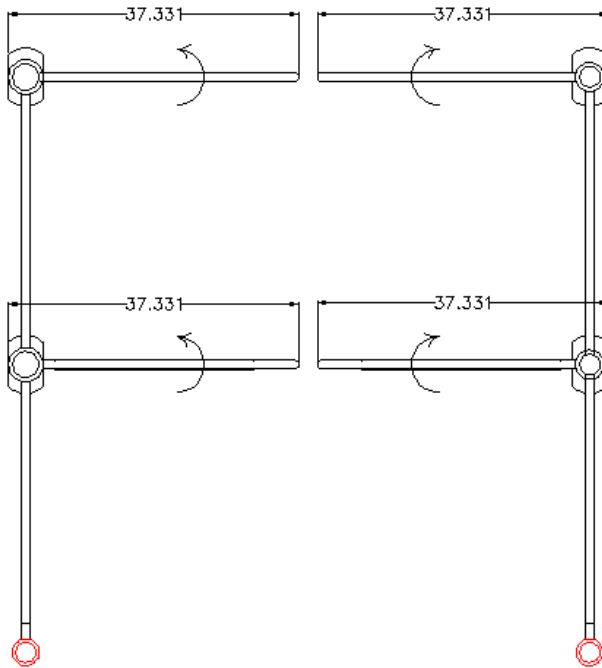


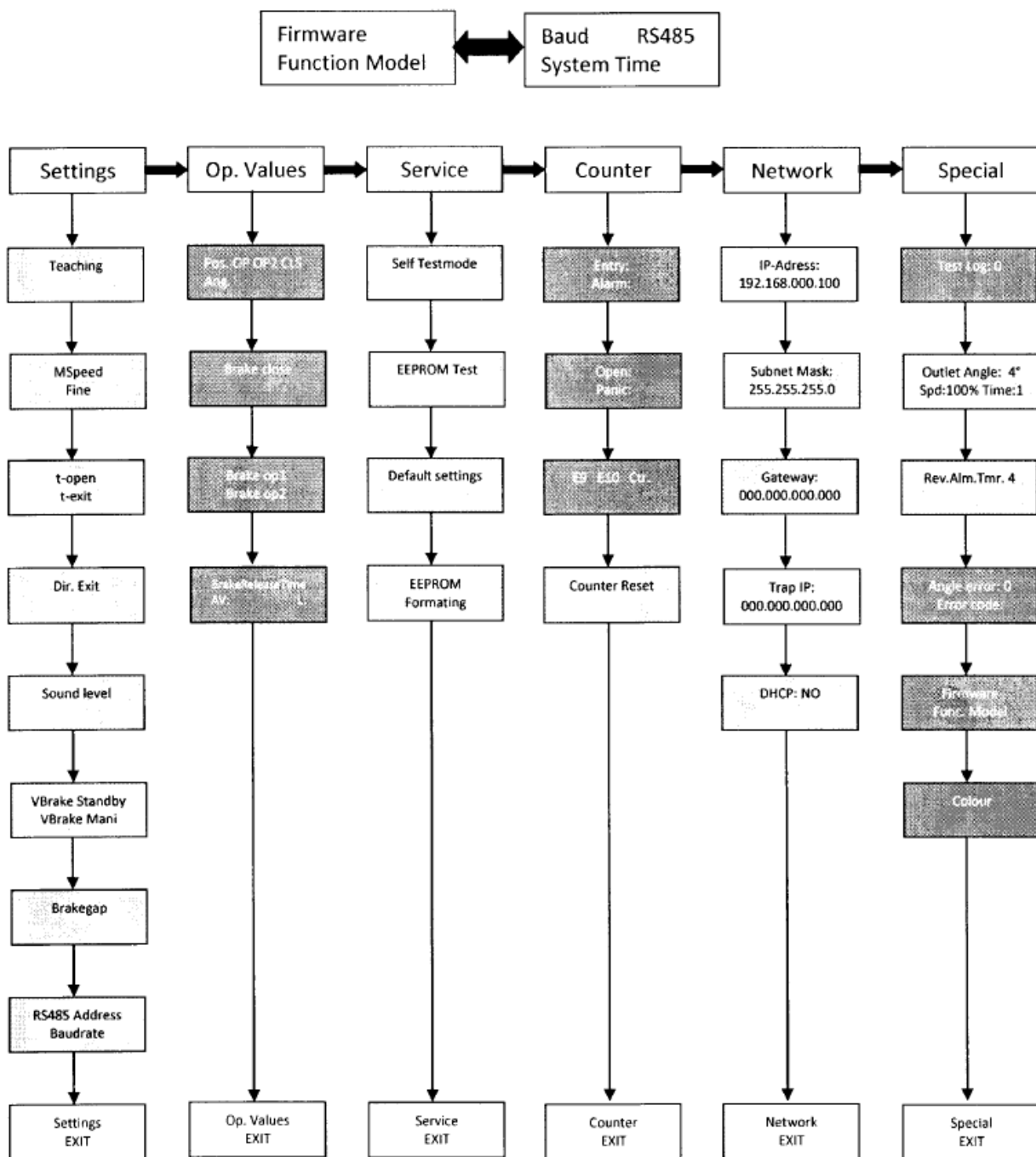
**ELECTRICAL CONT.**

BRING POWER INTO GATE #1  
AND THEN “DAISY CHAIN” TO  
GATES #2 AND #3 FOR POWER



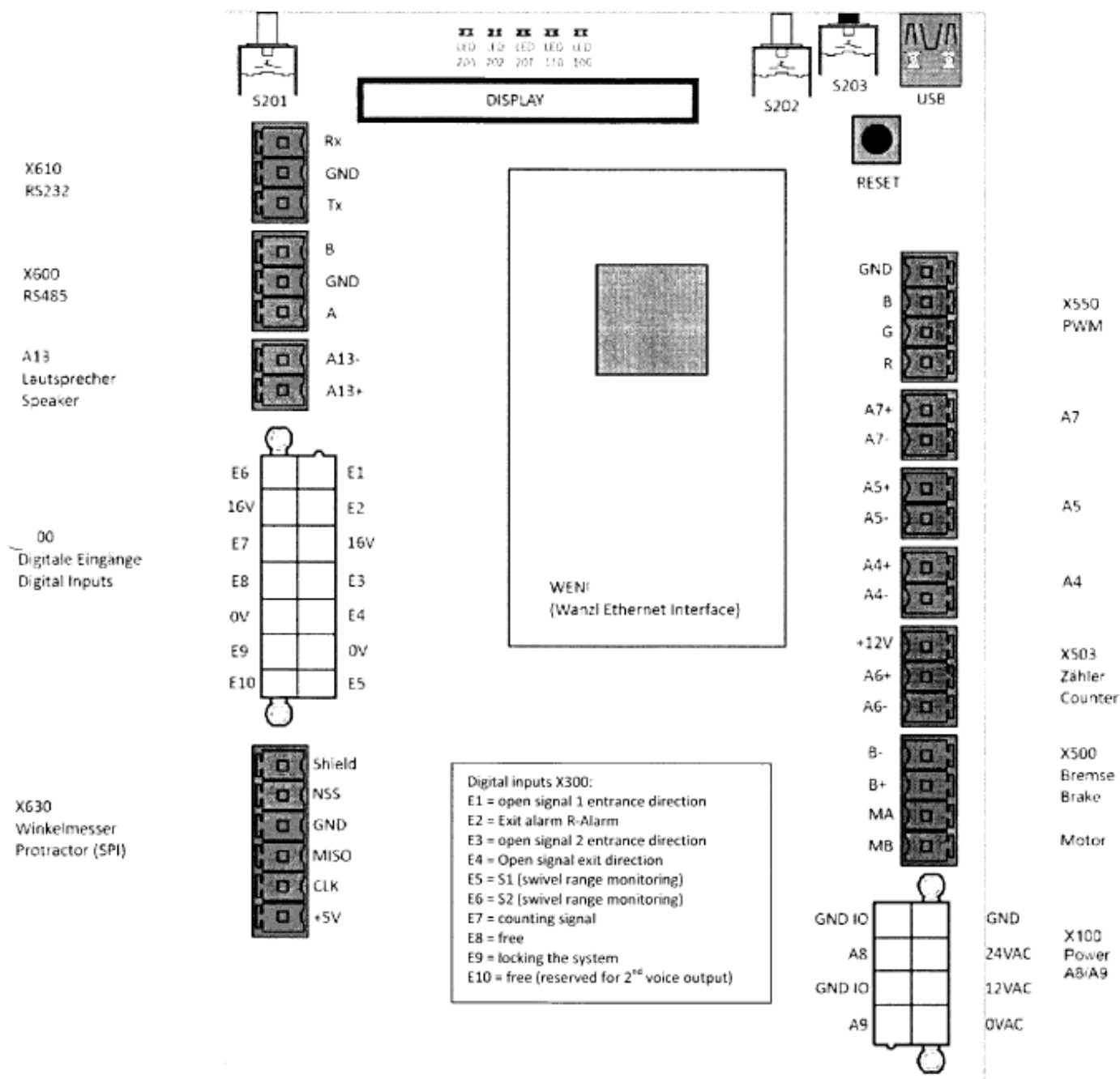
**SOME EXAMPLE OF AUTO GATE LAYOUT**



OVERVIEW OF THE SETTINGS



## OVERVIEW OF THE CONTROL UNIT



## **IMPORTANT POINTS**

- As system with WEAC2 **NO** compensating resistor must be installed at the power supply unit.
- At the power supply a shielding line must be used at the power supply (98.74564.00-0000). This is the same shielding line that we already use in Eco port systems with WEPC.

## **SETTINGS**

With the buttons S201 and S202 you can switch between the menu options. The button S203 is used as an enter button.

To select a desired option in the menu just push the button S203 to get into the submenu. The buttons S201 and S202 can be used again to navigate in the submenus.

To change an adjustable value push the button S203 till the value is flashing.

Now the value can be changed with the buttons S201 and S202.

When the desired value is reached save it by pushing the button S203.

At the end of each menu option there is the possibility to get back to the previous level. If you wait a certain time, the display returns automatically back to the previous level.